

Sold



225A SUNRISE ROAD, Doonan



GREAT FAMILY HOME WITH TEENAGER RETREAT LOCATED IN THE NOOSA HINTERLAND.

This home is situated in the exclusive position of the Noosa hinterland known as Doonan.

Twelve minutes to Noosa, five minutes to Eumundi and ten minutes to Cooroy make this home a very desirable place to enjoy your peaceful hinterland acreage.

This family home is elevated with undercover extensive decks designed to capture the breezes, creating a sense of space and a peaceful environment.

Open plan with mixed hardwood floors and large window space to enjoy the vistas and serenity.

Wheel chair friendly, suitable dual living downstairs, plenty of parking for caravan or boat plus cars.

Two bay shed with workshop space available. Plenty of fresh water for the house with organic vegetable gardens and mixed fruit

4 3 3 6,151 m²

Price SOLD for
\$850,000

Property Type Residential

Property ID 112

Land Area 6,151 m²

Agent Details

David Berns – 0408 629 438

Office Details

David Berns Real Estate
0408 629 438



orchard.

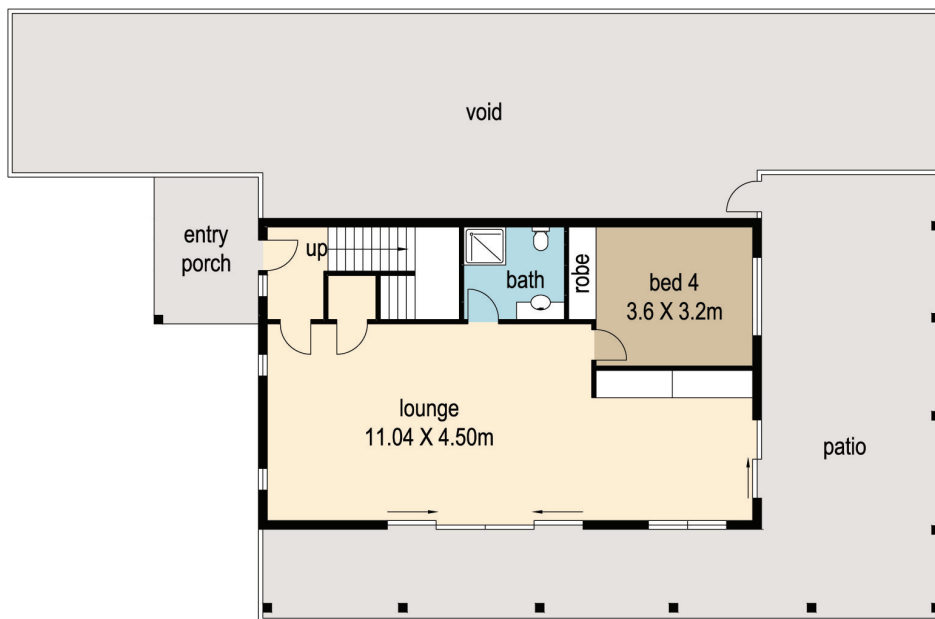
- . Four bedrooms, three bathrooms two living zones, two outdoor areas
- . Solar power, Easterly vistas, landscaped gardens and lawns for the kids to play
- . All your own homegrown herbs, vegetables and orchards for a healthy lifestyle
- . School pickup available, room for a pool
- . Option 90 square meter separate studio for extended family or air b and b

The above information provided has been furnished to us by the vendor/s. We have not verified whether or not that information is accurate and do not have any belief in one way or the other in its accuracy. We do not accept any responsibility to any person for its accuracy and do no more than pass it on. All interested parties should make and rely upon their own inquiries in order to determine whether or not this information is in fact accurate.

225A Sunrise Road, Doonan



upper level



ground level

10 1 2 3 4 5
metres

= 275m²
 = 91m²
TOTAL = 366m²

DISCLAIMER : While every endeavour has been made to verify the correct details in this illustration neither the agent, vendor nor the contracted illustrators/typesetters accept liability for any error or omission. Information intended to be relied upon should be independently verified. Be advised that any measurements are made approx from the widest point to that area.

