

Sold



8 Mindi Road, Doonan



PREMIER POSITION, ONE LEVEL FAMILY HOME WITH IMPRESSIVE VIEWS.

Situated in an exclusive and elevated cul-de-sac position in the Noosa Hinterland this home offers a peaceful and private place of living.

Enjoy wide angle views from the Coral Sea to Mount Cooroy, along with the magnificent sunrises and sunsets from this outstanding property.

This home is built all on one level with a separate private cabin, a fully fenced yard, salt water pool and expansive outdoor entertaining areas with magnificent vistas.

Situated in a quiet street with a long level driveway and plenty of room for cars boats and caravans and the children to play.

- Elevated position with north easterly aspect and panoramic views

🏠 5 🛏 2 🚗 2 🌊 📏

13,000m²

Price SOLD for
\$1,350,000

Property Type Residential

Property ID 123

Land Area 13,000 m²

Agent Details

David Berns - 0408 629 438

Office Details

David Berns Real Estate

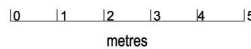
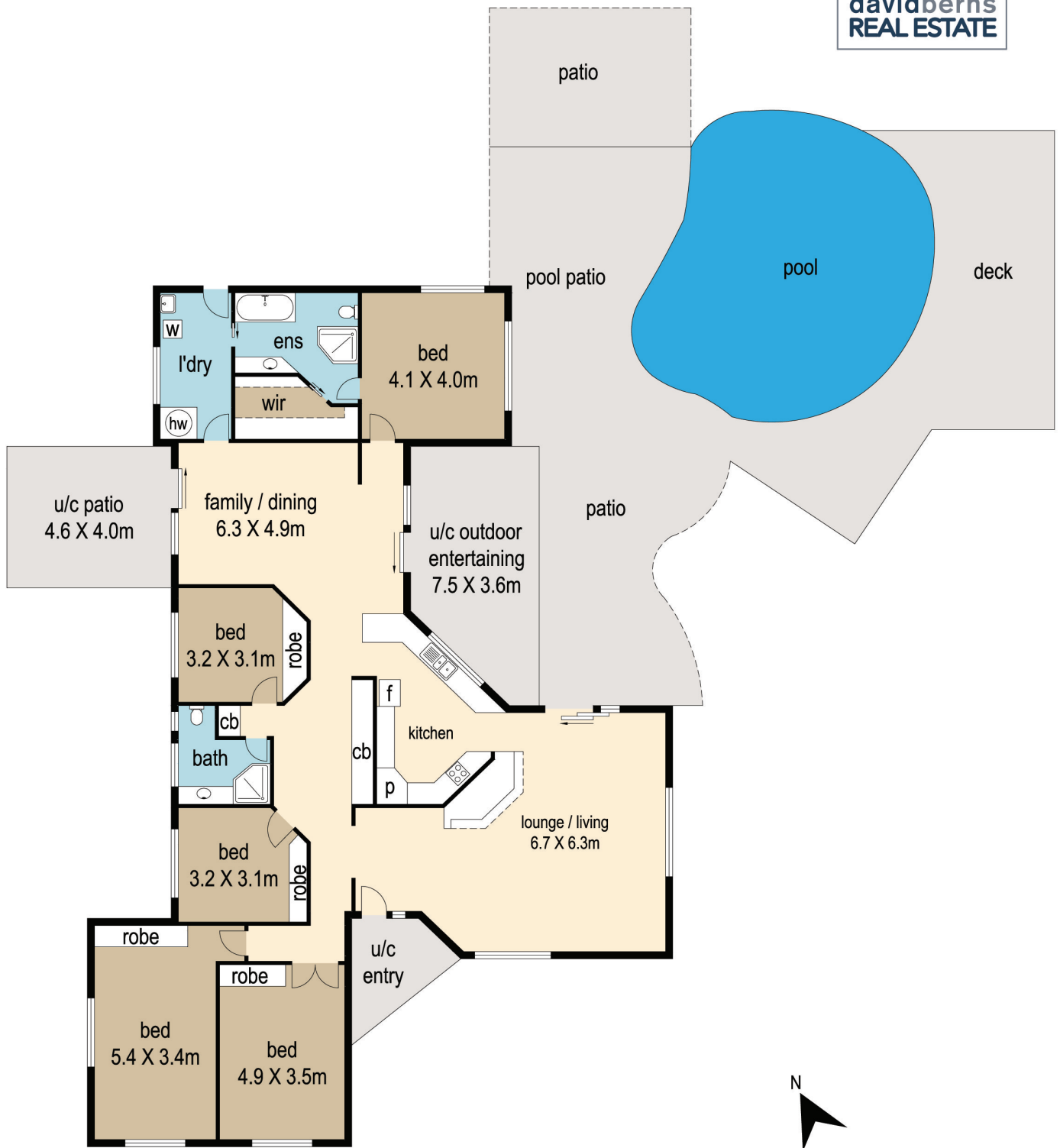
0408 629 438



- Expansive outdoor entertaining all on one level overlooking the pool
- Excellent floor plan layout enjoying peace and privacy
- Separate studio away from the home
- Purpose built triple carport for car, boat or caravan
- Variety of fruit trees, vegetable gardens beds
- School bus pick up close to your fine selection of schools
- Close to Noosa and our famous beaches
- A very desirable place to live in the Noosa Hinterland

The above information provided has been furnished to us by the vendor/s. We have not verified whether or not that information is accurate and do not have any belief in one way or the other in its accuracy. We do not accept any responsibility to any person for its accuracy and do no more than pass it on. All interested parties should make and rely upon their own inquiries in order to determine whether or not this information is in fact accurate.

8 Mindi Road, Doonan



= 219m²
 = 243m²
TOTAL = 462m²

DISCLAIMER : While every endeavour has been made to verify the correct details in this illustration neither the agent, vendor nor the contracted illustrators/typesetters accept liability for any error or omission. Information intended to be relied upon should be independently verified. Be advised that any measurements are made approx from the widest point to that area.

www.floorplansplus.com.au

 m 0404 430 300
floor@floorplansplus.com.au