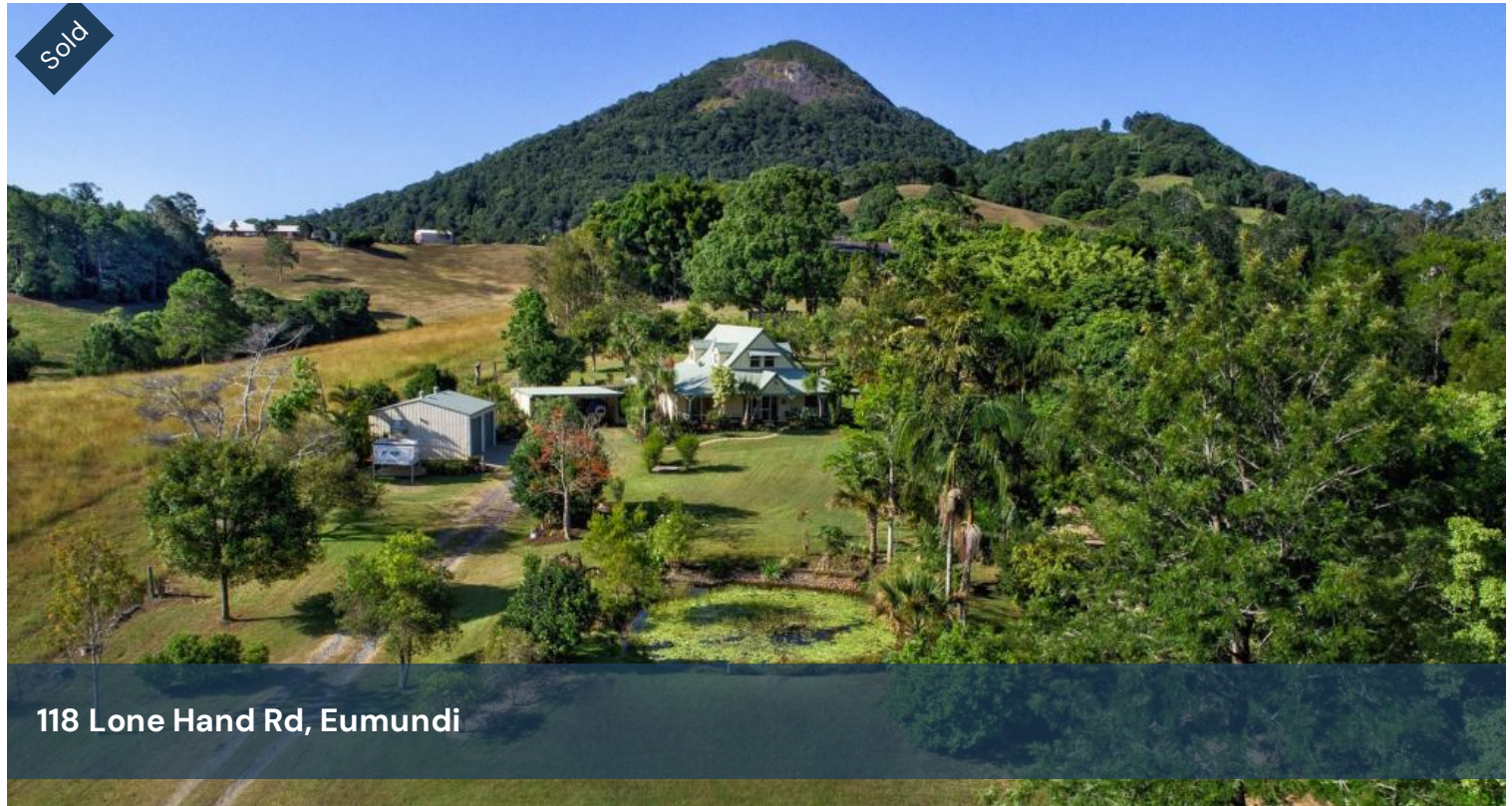


Sold



118 Lone Hand Rd, Eumundi



PRIVATE PIECE OF HEAVEN IN A PRIME LOCATION

Situated in the heart of the Cooroy Mountain dress circle, this charming property is a must see for those seeking low maintenance useable acreage in a prime location.

Features in a nutshell:

- 1.74 acres of useable land, great for kids and four legged friends
- 4 bedrooms, 2 bathrooms & 2 living areas in 2 convenient zones
- Split system aircon, ceiling fans throughout & loads of cross flow ventilation
- Window & door locks and security screens throughout
- 2 bay carport with concrete floor and handy storage room
- 2 bay roller door lock up shed on concrete slab
- Approx. 10,000 gallon capacity rain water tanks
- Quality water bore with low mineral content
- Fully fenced with an animal shelter to the rear of the property

🏠 4 🚿 2 🚗 4 📏 7,071 m²

Price	SOLD
Property Type	Residential
Property ID	157
Land Area	7,071 m ²

Agent Details

Heidi Woodman – 0419 818 418

Office Details

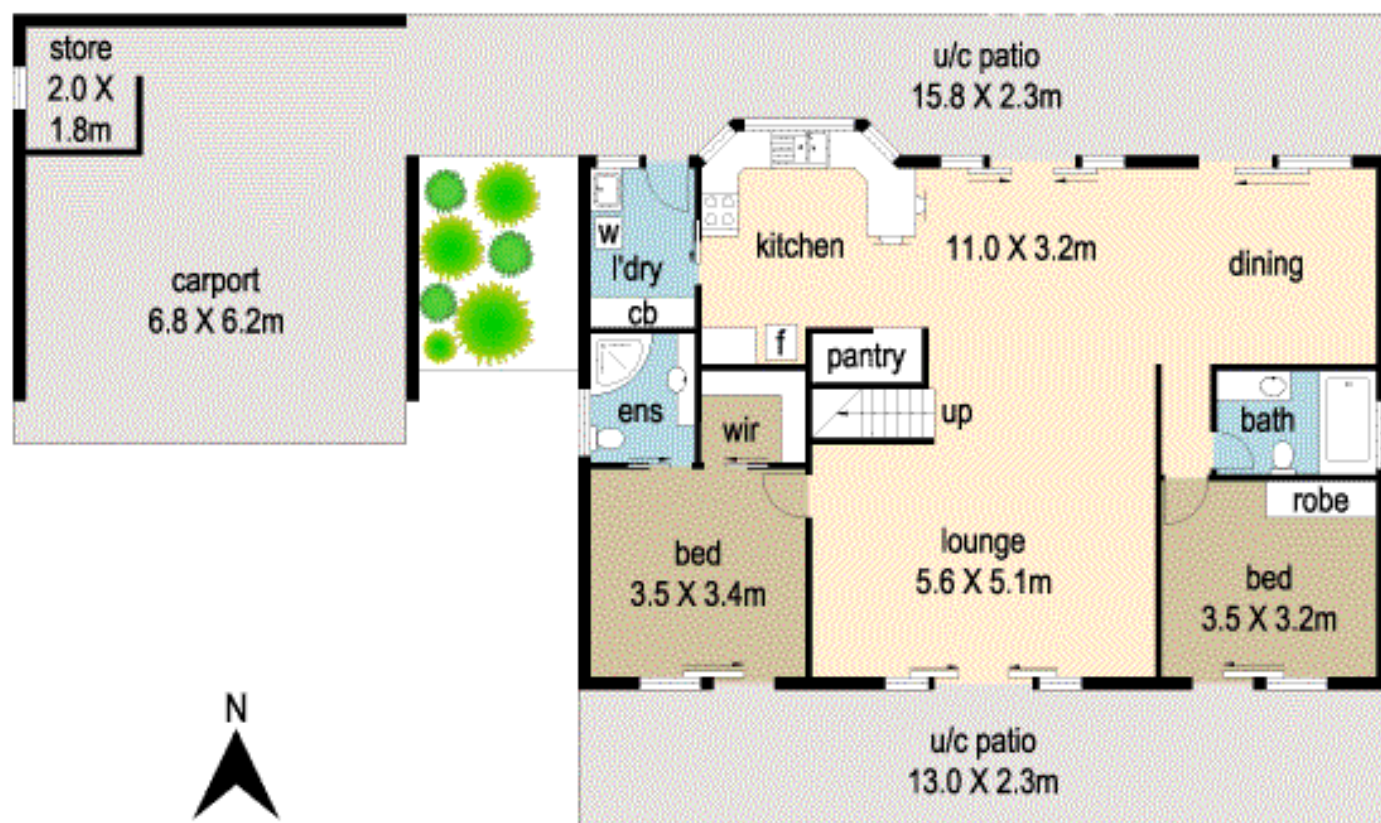
David Berns Real Estate
0408 629 438



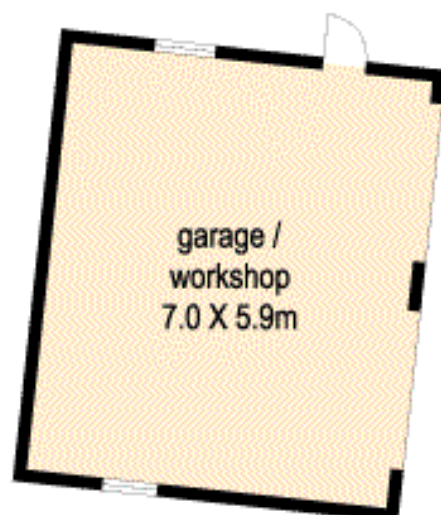
- 2 mins to Eumundi, 10–15 mins to shops, restaurants and beaches of Noosa
- A wide assortment of quality schools within easy reach

The above information provided has been furnished to us by the vendor/s. We have not verified whether or not that information is accurate and do not have any belief in one way or the other in its accuracy. We do not accept any responsibility to any person for its accuracy and do no more than pass it on. All interested parties should make and rely upon their own inquiries in order to determine whether or not this information is in fact accurate.

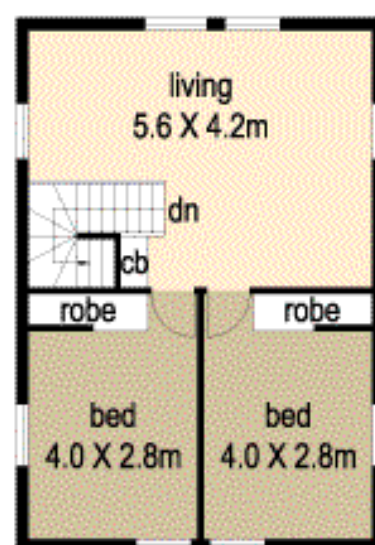
118 Lone Hand Rd, Eumundi



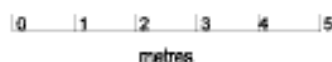
ground level



garage(nltp)



upper level



= 196m²
 = 108m²

TOTAL = 304m²

DISCLAIMER: While every endeavour has been made to verify the correct details in this illustration neither the agent, vendor nor the contracted illustrators/typesetters accept liability for any error or omission. Information intended to be relied upon should be independently verified. Be advised that any measurements are made approx from the widest point to that area.

