

Sold

24 Mindi Rd, Doonan



HEADING – SENSATIONAL CUTTING EDGE DESIGN, "WOW FACTOR", FAMILY HOME WITH AMAZING VIEWS.

Agents Report: Modern architectural design and the sensational layout of this quality is a rarity in the Noosa Hinterland and will be in high demand.

Nearly new, luxury build offering very peaceful, useable acreage for relaxing lifestyle in the most exclusive part of Doonan in the Noosa Hinterland.

This home ticks all the boxes:

- Four bedrooms, Four ensuites, room for another if needed
- Large butlers kitchen, dual pyrolitic ovens, dual dishwashers, so many options
- Beautiful natural flooring enhancing the modern style throughout the home
- Incredible amount of storage options and a 4 car garage

🛏 4 🍷 4 🚗 4 🌊 📺

1.06 ha

Price	SOLD
Property Type	Residential
Property ID	168
Land Area	1.06 ha
Floor Area	651 m2

Agent Details

David Berns – 0408 629 438

Office Details

David Berns Real Estate
0408 629 438



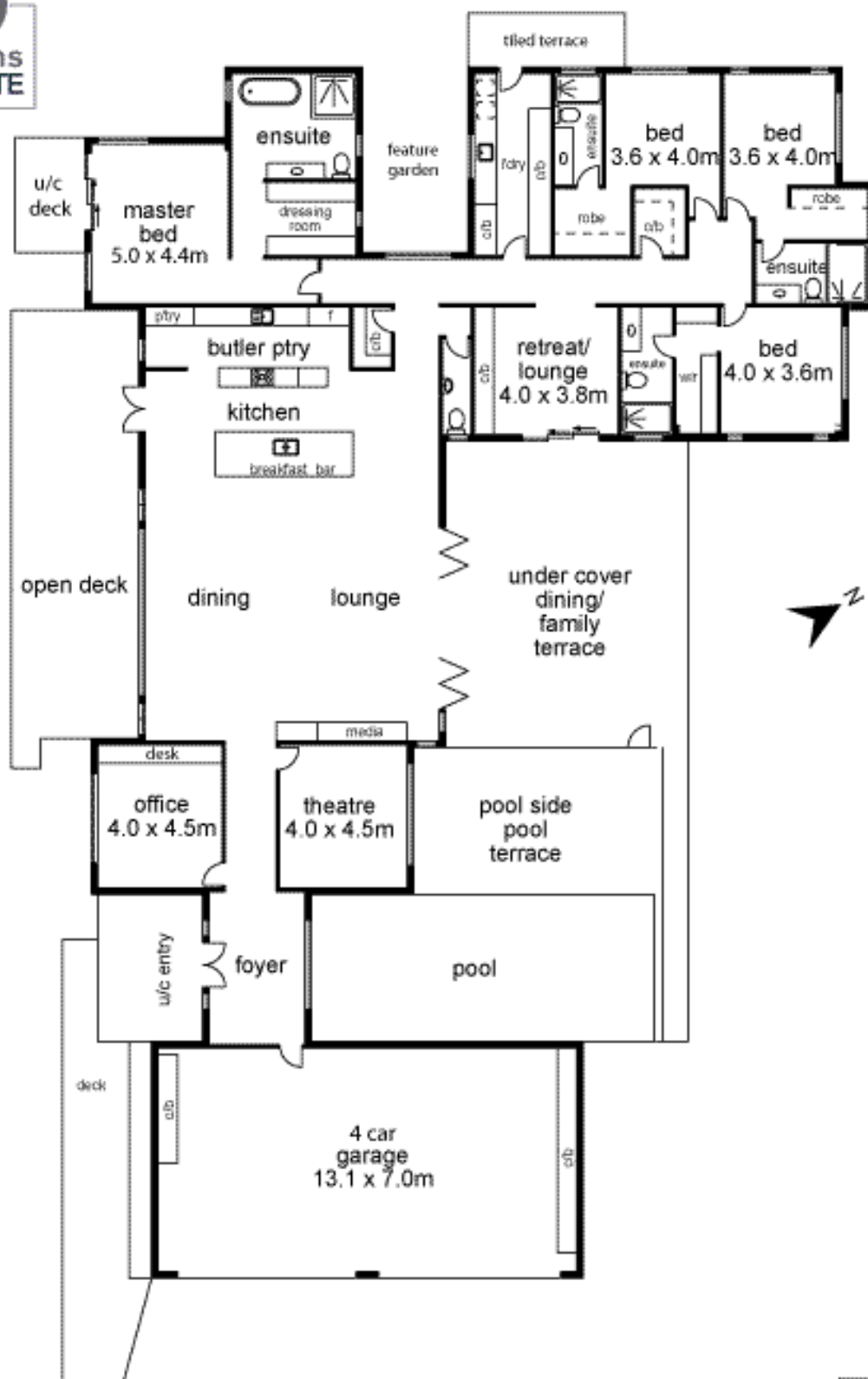
- Ducted vacuuming, 2 r/c ducted air conditioning, LED

Lighting and Back To Base Alarm

- Dual living areas, stunning pool on the northern aspect
- Peace of mind watching the kids swim from all living areas
- Striking views and outdoor entertaining to the North and South
- Views from all rooms overlooking a quality acreage
- 2.7 useable acres, vegetable gardens, citrus trees and dam
- Elevated, level acreage for the family to play
- Exclusive location on private cul-de-sac
- This home is built for Queensland lifestyle, winter and summer
- 9.8 Kw Solar with Tesla Battery
- Designed for summer breezes with wide corridors and louvres in every room
- Beautiful wildlife, kangaroos, wallabies, a true lifestyle change
- Numerous School bus pickup options very close
- 13 minutes into Noosa, 25 minutes to Sunshine Coast Airport
- Business option, room for a 90m2 studio with separate access

The above information provided has been furnished to us by the vendor/s. We have not verified whether or not that information is accurate and do not have any belief in one way or the other in its accuracy. We do not accept any responsibility to any person for its accuracy and do no more than pass it on. All interested parties should make and rely upon their own inquiries in order to determine whether or not this information is in fact accurate.

24- 28 Mindi Road Doonan



total floor area
approx 651m²

DISCLAIMER: While every endeavour has been made to verify the correct details in this floor plan, vendor nor the contracted illustrators/typesetters accept liability for any error or omission. Information intended to be relied upon should be independently verified.