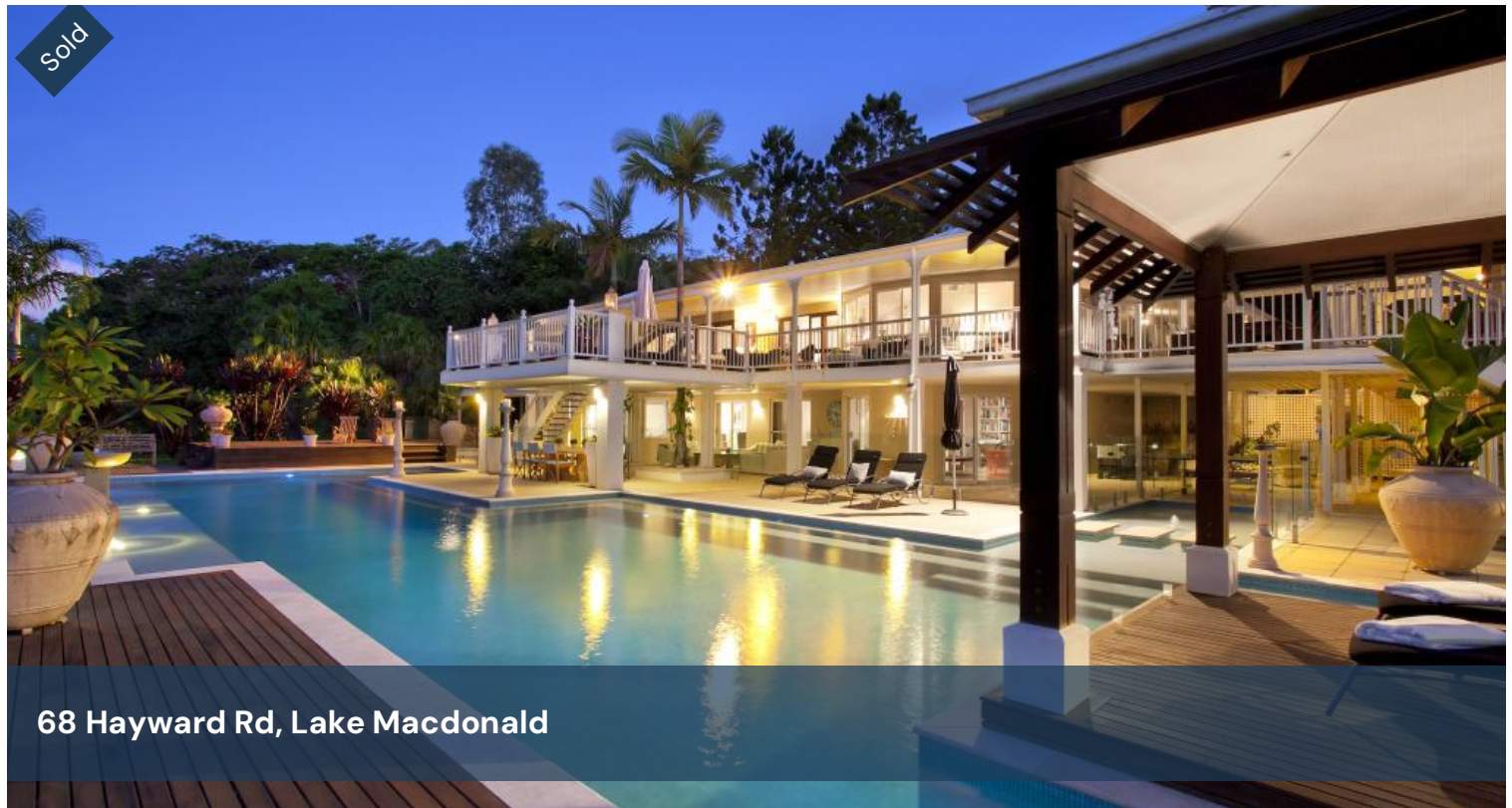


Sold



68 Hayward Rd, Lake Macdonald



THE LAKE HOUSE

Situated on a no-through road, boasting an impressive 132m of north facing lake frontage to Lake MacDonald, The Lake House is an example of timeless elegance in the Queenslander style. A comfortable family home offering approx 1000m² under roof with an abundance of natural light and spacious wrap-around verandas that make the most of the sun's passage and prevailing breezes, a design well suited to the Queensland climate.

The versatile layout provides a variety of zones suited to extensive family and guest accommodation with spacious entertaining, recreational and office areas. The pool is nothing short of luxury resort standards.

Features include:

- Set back from the road on 5.13 acres of lake frontage, absolute privacy is assured
- Extensive decks flow from all living areas providing ample space to relax and take in the lake views
- Massive 64 panel Solar Power System (approx. 20kw) for guilt

8 7 6 5.13 ac

Price SOLD for
\$2,750,000

Property Type Residential

Property ID 180

Land Area 5.13 ac

Agent Details

David Berns – 0408 629 438

Office Details

David Berns Real Estate
0408 629 438

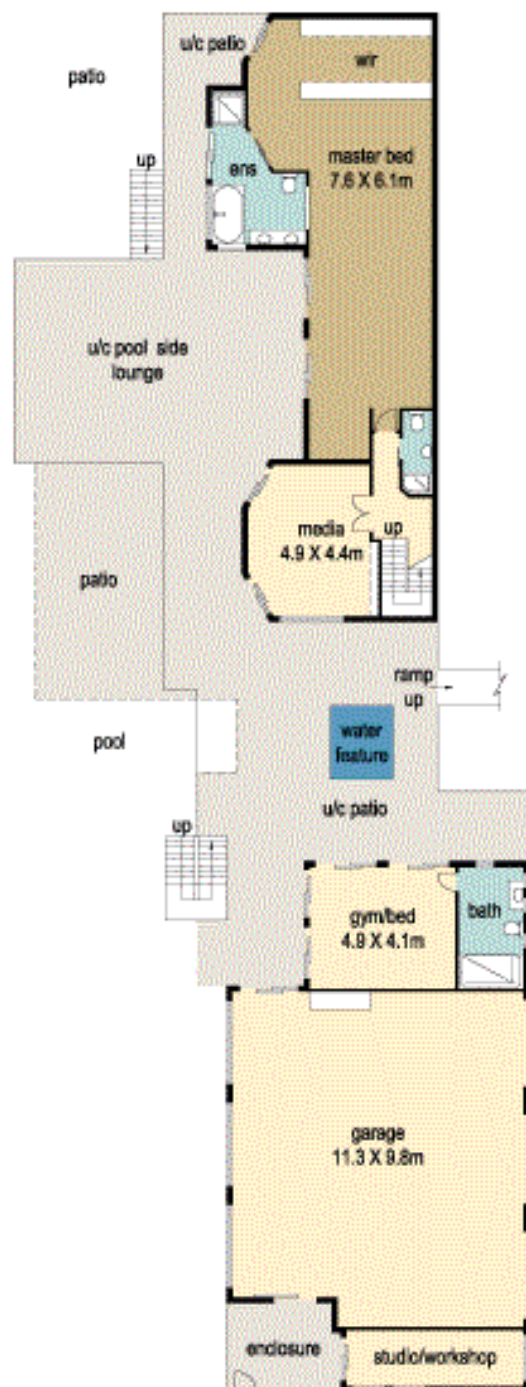


free power usage

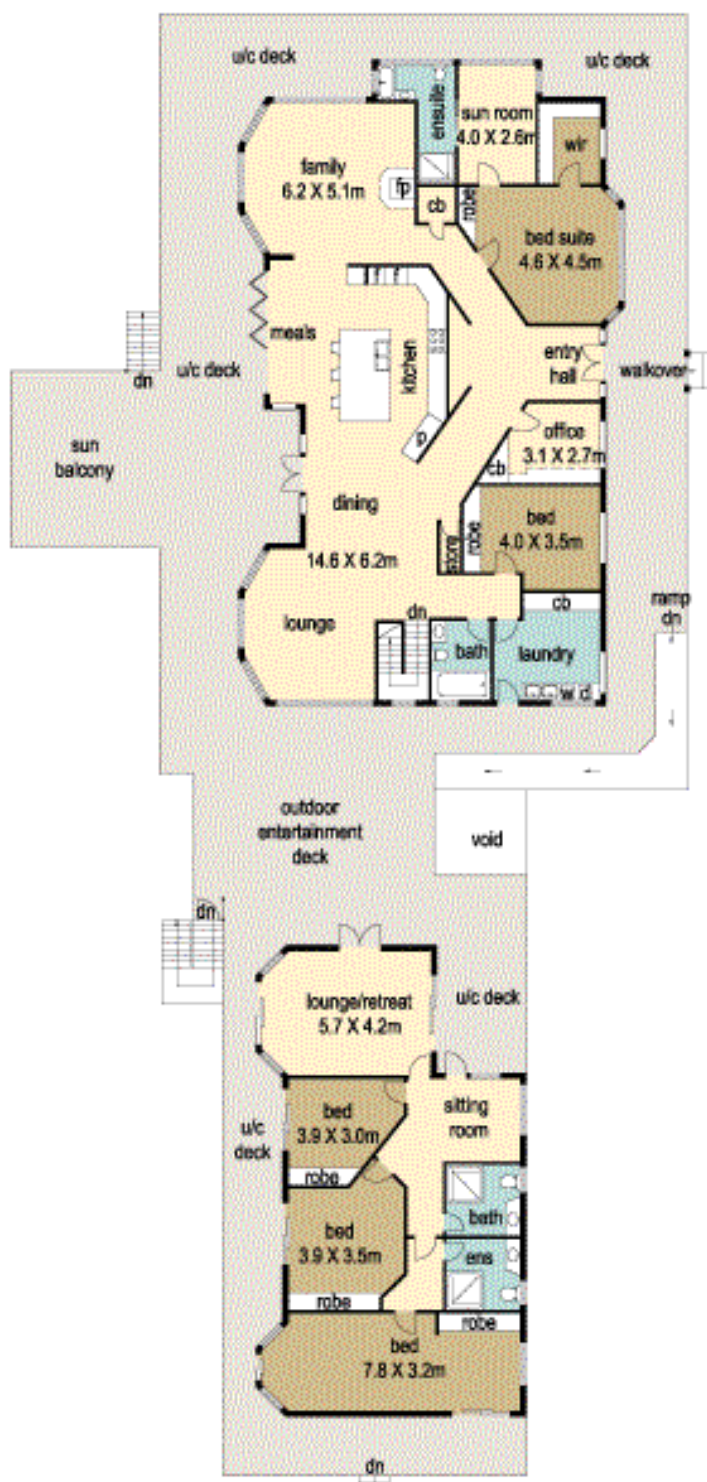
- Quality artesian Bore to water points all over the gardens plus approx. 10,000 gallon rain water tanks
- Wood fired combustion burner for cosy winter nights plus ducted air-con & heating
- Oversized 3 bay remote control garage and plenty of off-street guest parking
- Alarm system & intercom system, fully fenced right up to the lake's edge
- Delightful gardens, established trees, exotic palms and lawned areas that lead down to the lake's edge
- All just a straight forward 10 minute drive to Noosa and 3 minutes to the handy town of Cooroy.

The above information provided has been furnished to us by the vendor/s. We have not verified whether or not that information is accurate and do not have any belief in one way or the other in its accuracy. We do not accept any responsibility to any person for its accuracy and do no more than pass it on. All interested parties should make and rely upon their own inquiries in order to determine whether or not this information is in fact accurate.

68 Hayward Dve, Lake Mcdonald



ground floor



first floor



= 609m²
 = 609m²
 = 609m²
TOTAL = 1218m²

DISCLAIMER : While every endeavour has been made to verify the correct details in this illustration neither the agent, vendor nor the contracted illustrators/typesetters accept liability for any error or omission. Information intended to be relied upon should be independently verified. Be advised that any measurements are made approx from the widest point to that area.

