

Sold

87 Marnie Cres, Doonan



## AT ONE WITH NATURE

The perfect retreat surrounded by serene natural forest, this well maintained highset ambient pole home has wide wraparound verandas and soaring cathedral ceilings. A separate self-contained studio provides an extra bedroom, creative space or handy income producing option.

- Quality hardwood construction with custom built cedar windows and doors
- Open plan, expansive living and dining areas, feature celestial windows
- Beautiful timber flooring, majestic raked 20 ft high ceilings, exposed Oregon rafters
- Large country style kitchen, cedar hopper windows, island bench with gas hob, new oven
- Spacious main bedroom on upper level, walk-in robe, bathroom, lovely timber stairway
- Ambient wood heater for the winter months in expansive sunken lounge room
- New 7kw reverse cycle air conditioner, new hot water system, 3 x

🛏 3 🍳 3 🚗 4 📏 6,151 m2

**Price** SOLD for  
\$686,000

**Property Type** Residential

**Property ID** 218

**Land Area** 6,151 m2

### Agent Details

George Andrews - 0447 778  
951

### Office Details

David Berns Real Estate  
0408 629 438



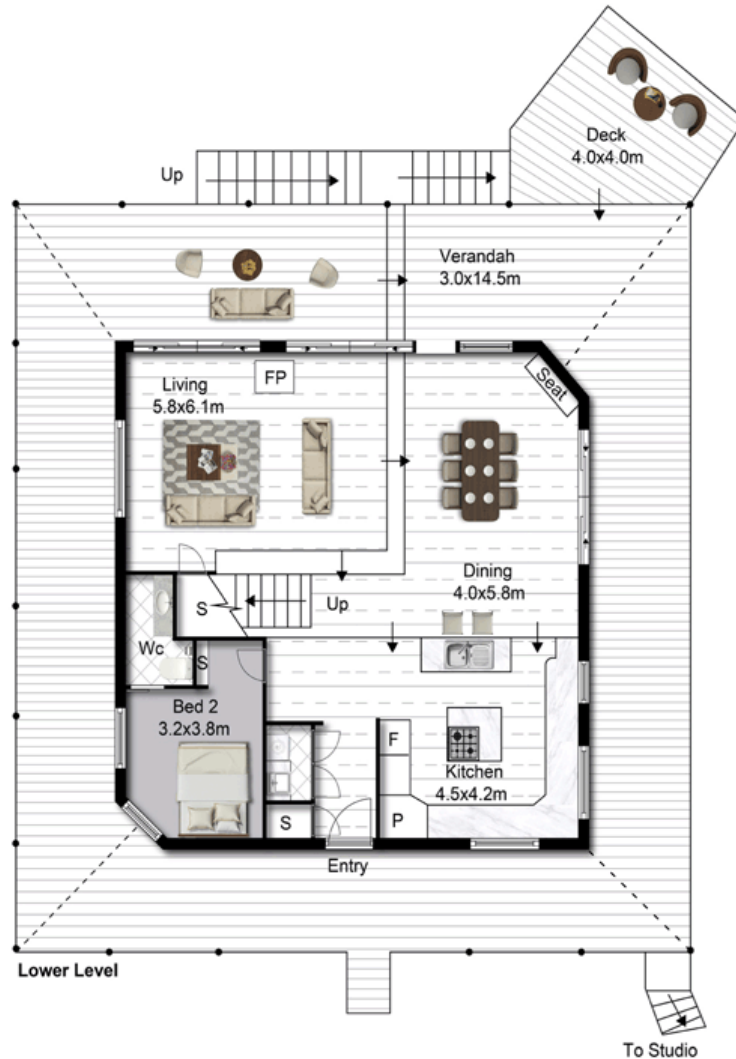
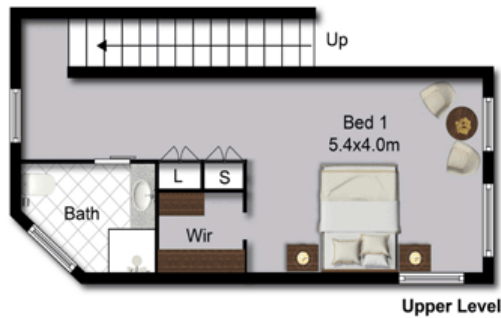
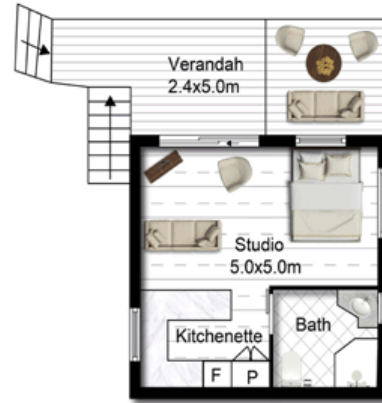
near new water tanks

- Custom built sliding cedar doors and screens open wide to full wraparound verandas
- Viewing platform sun deck overlooks gently sloping back yard with mango trees and seasonal creek
- Separate self-contained studio with ensuite, kitchenette and private undercover deck
- 7m x 6m double lockup garage with handy workshop area and storage space
- Unique artistic fence frames the front entrance and veggie garden area
- Attractive gardens featuring rainforest plantings, nature trails, mature mango trees
- Private, elevated, tranquil north-east setting with abundant birdlife and visiting wallabies

A calming yet revitalising sanctuary in a quiet, caring neighbourhood close to both Noosa and Eumundi. Call for more information or to organise an inspection.

The above information provided has been furnished to us by the vendor/s. We have not verified whether or not that information is accurate and do not have any belief in one way or the other in its accuracy. We do not accept any responsibility to any person for its accuracy and do no more than pass it on. All interested parties should make and rely upon their own inquiries in order to determine whether or not this information is in fact accurate.

# 87 Marnie Crescent DOONAN QLD 4562



This floor plan is intended as a guide only. Layout dimension are approximate only. No representation or warranties of any nature whatsoever are given or intended. Any person using this information should rely on their own enquiries.

