

Sold



4 Mallee Cl, Doonan



## QUINTESSENTIAL QUEENSLANDER

In true Queenslander style, this character filled home offers high ceilings, polished timber floors, colonial style timber sash and bay windows, ornate cornices, picture rails and a masonry open fire place for romantic winter nights.

Verandahs spanning the south, east and western sides of the home make the most of the sun's passage and prevailing breezes, a design that has worked beautifully with the Queensland climate from early settler days.

The living areas flow casually to an extensive undercover deck adjacent the in-ground pool and offer peaceful rural views over the property and beyond. The perfect place to relax and unwind at the end of every day.

- Set well back from the road on a fully fenced, private 1.9 acres
- Main home offers ground level access, 3 bedrooms and 2 bathrooms
- Same level separate 1 bed self-contained studio & 2 bay garage plus carport

🏠 4 🛎 2 🚗 3

<b>Price</b>	SOLD
<b>Property Type</b>	Residential
<b>Property ID</b>	221

### Agent Details

### Office Details

David Berns Real Estate  
0408 629 438



- Insulated roof cavity, ceiling fans & split system air-conditioning
- Security mesh screens and a 4 camera security system
- Approx.10,000gal rainwater capacity, plus dam with pump and an artesian bore
- Plenty of room for under house storage plus a wine cellar
- Low maintenance gardens with great chicken coop for those in favour of fresh eggs
- Loads of kookaburras, cockatoos, friendly ducks and even the odd koala bear
- Room for a pony and opportunity to agist more on a neighbouring property
- 10 mins to Noosa's shops and 15 minutes to the beaches & restaurants

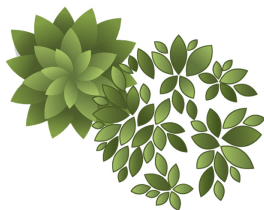
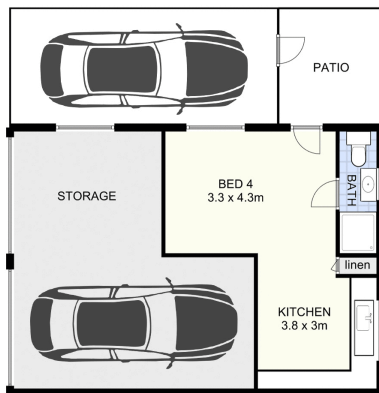
The above information provided has been furnished to us by the vendor/s. We have not verified whether or not that information is accurate and do not have any belief in one way or the other in its accuracy. We do not accept any responsibility to any person for its accuracy and do no more than pass it on. All interested parties should make and rely upon their own inquiries in order to determine whether or not this information is in fact accurate.

## 4 Mallee Close, **DOONAN**

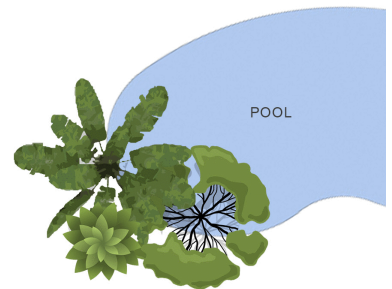
Internal: 170sqm | External: 130sqm | TOTAL: 300 sqm



Studio Flat



Main Residence



Plan not to scale & areas approx. To be used for illustrative purposes only. Plan by realexposure.com.au