

Sold



4 Hinterland Cl, Tinbeerwah



Peace & Quiet with Ocean Views

Near the end of a whisper quiet private lane, this gorgeous pole home set on 2.4 acres is the ideal place to start your new Noosa Hinterland lifestyle.

Imagine waking up to watch the sunrise over the ocean surrounded by tranquil morning birdsong. This is an amazing position facing East and so peaceful.

With blue water views to Noosa Heads, Lake Weyba and Peregrine Beach, you'll spend many hours on the large undercover veranda, perfect for alfresco dining or soaking up the sun on lazy Winter days.

Soaring cathedral ceilings accentuate the vast open plan design with beautiful timber floors and ambient Winter fireplace. Large sliders access the decks for seamless indoor/outdoor living.

Get back to nature and grow your own healthy herbs and veggies for use in the large kitchen with Miele gas cooktop and tropical garden outlook. There's even a chicken pen for fresh eggs.

🏠 3 🛏 3 🚗 1 📏 9,726 m²

Price SOLD for
\$1,400,000

Property Type Residential

Property ID 322

Land Area 9,726 m²

Floor Area 269 m²

Agent Details

George Andrews – 0447 778 951

Office Details

David Berns Real Estate
0408 629 438



The private ensuited master bedroom has veranda access and looks out over lovely native bushland full of colourful birds, a nice place to wake up and very quiet at night.

There's a separate ensuited guest bedroom on the middle level with beachy feel and large private veranda offering excellent views towards Coolumb and the ocean. Perfect for extended family or perhaps to offer as a quiet weekend on Airbnb.

A quiet office space which could be a 4th bedroom is ideal for working from home, though the verandas will always draw you outside, think laptop in the sun perhaps on a hammock.

On the lowest level a handy workshop space is great for storage or a creative space in solitude and peace. Surrounded by abundant fruit trees, landscaped gardens and grassy areas, there's heaps of room for more natives and maybe a pool.

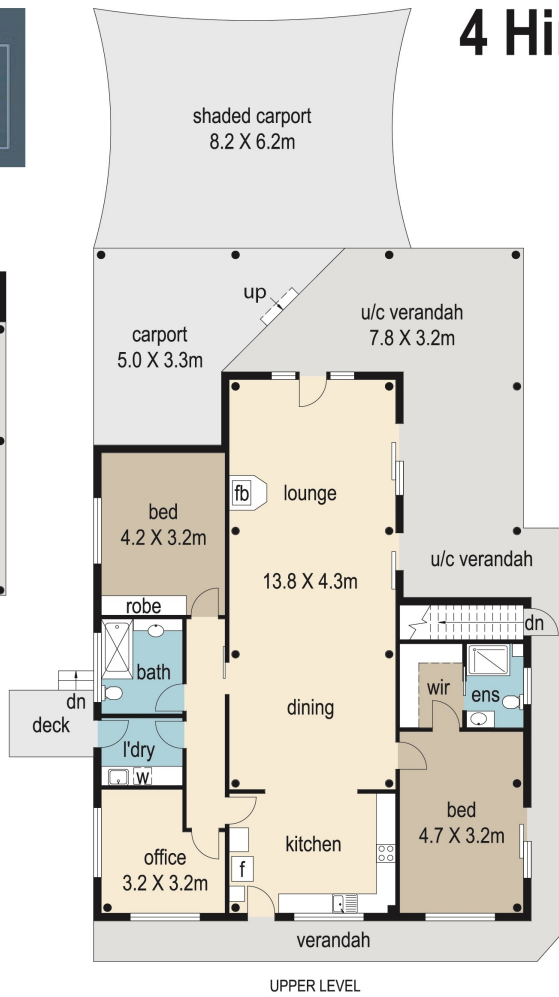
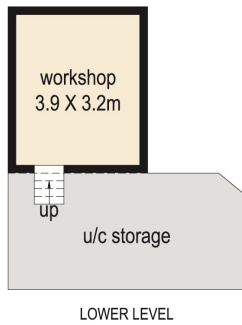
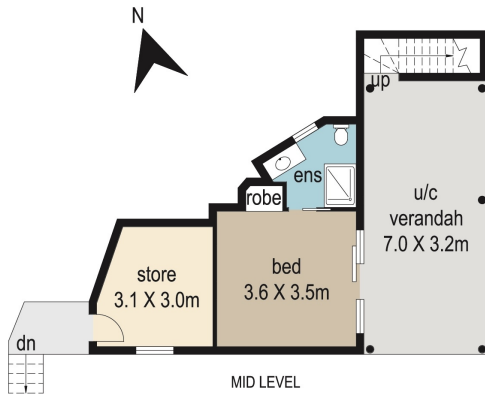
A large variety of fruit trees includes guava, mandarin, tropical apple, olive, macadamia, kaffir lime and davidson plum.

Walking tracks within the property lead you past the chook pen and garden sheds into your own rocky gully with seasonal creek and subtropical rainforest trees, home to endemic wildlife and rare native plants.

Live your new life in tranquility and nature just 15 minutes to Noosa River or 20 minutes to our amazing beaches. Please contact George Andrews for more info or to organise your private inspection.

The above information provided has been furnished to us by the vendor/s. We have not verified whether or not that information is accurate and do not have any belief in one way or the other in its accuracy. We do not accept any responsibility to any person for its accuracy and do no more than pass it on. All interested parties should make and rely upon their own inquiries in order to determine whether or not this information is in fact accurate.

4 Hinterland Close, Tinbeerwah



= 167m²
 = 102m²
TOTAL = 269m²

0 1 2 3 4 5
metres

DISCLAIMER : While every endeavour has been made to verify the correct details in this illustration neither the agent, vendor nor the contracted illustrators/typesetters accept liability for any error or omission. Information intended to be relied upon should be independently verified. Be advised that any measurements are made approx from the widest point to that area.

