

A large, modern outdoor patio with a covered area, featuring a dining table and chairs, surrounded by lush greenery and a sunset sky. A 'Sold' badge is in the top left corner.

Doonan

Level 1
6.3 x 3.0m

Level 2
6.3 x 3.0m

study
6.3 x 3.0m

living
5.4 x 7.9m

dining
6.3 x 3.0m

kitchen
6.3 x 3.0m

bath

study/bed

living
5.4 x 7.9m

dining
6.3 x 3.0m

kitchen
6.3 x 3.0m

study
6.3 x 3.0m

bath

garage
6.3 x 3.0m

lower level

study
6.3 x 3.0m

living
5.4 x 7.9m

dining
6.3 x 3.0m

kitchen
6.3 x 3.0m

study
6.3 x 3.0m

bath

garage
6.3 x 3.0m



AGENTS REPORT: THIS PERFECTLY POSITIONED HOME LOCATED ON PRESTIGIOUS VALLEY DRIVE, DOONAN HAS BEEN CORRECTLY PRICED TO SELL ON THE CURRENT MARKET.

- . This acreage offers many choices
- . Opportunity for secondary residence with sensational views
- . Magnificent family residence with potential dual living
- . From the moment you enter this home, your eye is drawn to spectacular views
- . Open plan living flows to a magnificent pool and garden setting
- . Extensive use of Bay windows, mitred glass and louvres to

7,649 m²

Agent Details

David Berns – 0408 629 438



db davidberns
REAL ESTATE

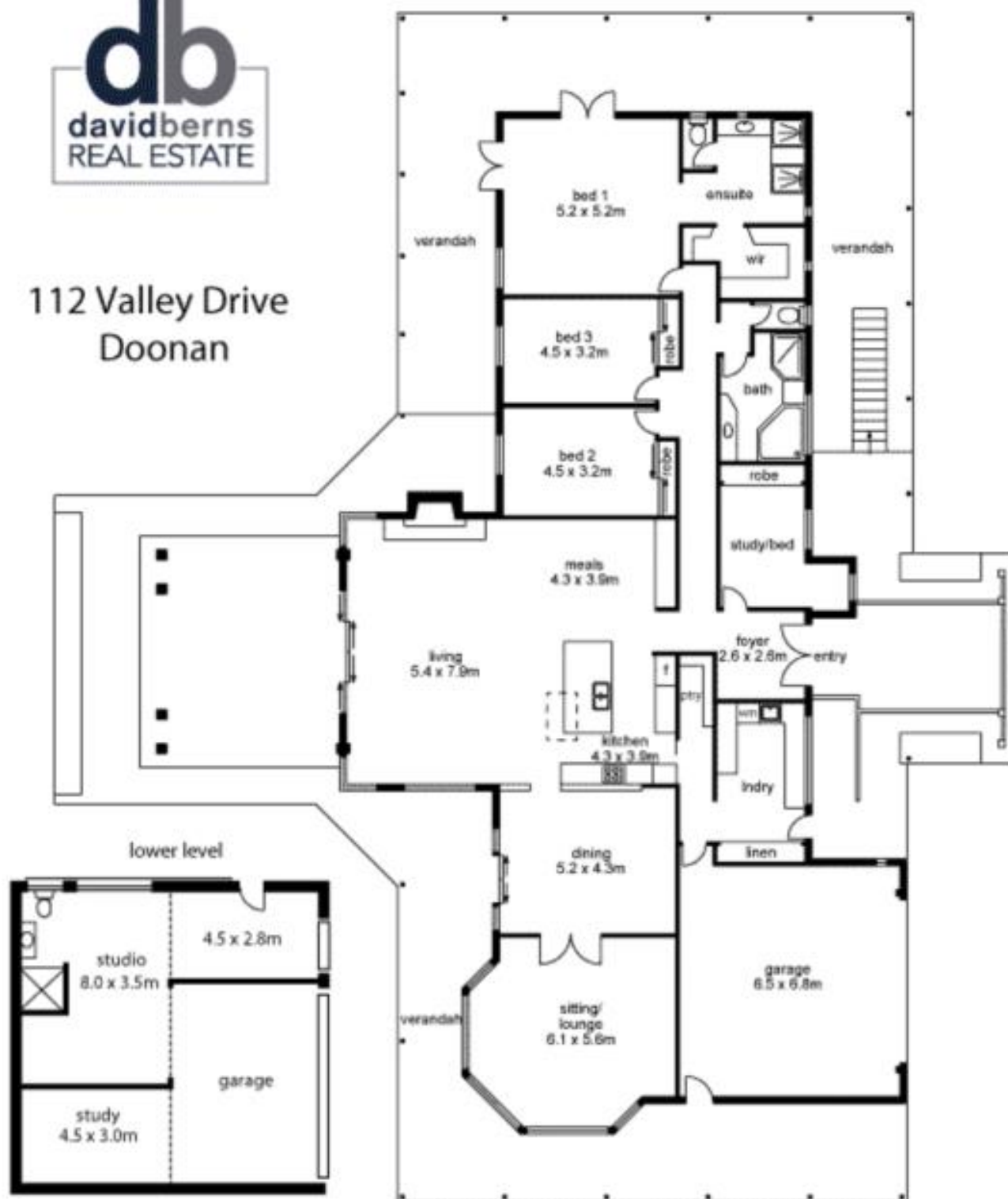
capture views and

sea breezes

- . Centrally located entertainers kitchen, indoor outdoor living
- . Undercover decks, 6x9m shed, dam, bore, five-kilowatt solar energy
- . Plentiful filtered tank water
- . School bus pickup in street, golf, tennis and squash so close
- . There is no better place to live!

The above information provided has been furnished to us by the vendor/s. We have not verified whether or not that information is accurate and do not have any belief in one way or the other in its accuracy. We do not accept any responsibility to any person for its accuracy and do no more than pass it on. All interested parties should make and rely upon their own inquiries in order to determine whether or not this information is in fact accurate.

112 Valley Drive
Doonan



internal floor area
approx 320m²

lower level floor area
approx 108m²

external floor area
approx 308m²

total floor area
approx 736 m²

DISCLAIMER: While every endeavour has been made to verify the correct details in this floor plan, vendor nor the contracted illustrators/typers accept liability for any error or omission. Information intended to be relied upon should be independently verified.