

Sold



10 Brushbox Pl, Eumundi



UNDER CONTRACT

Situated on a generous 1206m² block in an elevated position on a quiet cul-de-sac, this well built home offers many Queenslander style features with a modern, low maintenance twist.

The eastern verandah provides the perfect spot for a winter morning cuppa with views to distant mountains, while the northern verandah offers a great space for all weather alfresco entertaining, or enjoy a little luxury in the heated outdoor Spa, situated privately on the lower deck amongst tropical gardens

Fresh whites and neutral tones with plantation shutters throughout, easy care tiles in the spacious open plan living area and carpeted bedrooms, this well designed home is positioned to capture prevailing summer breezes and natural light while offering year round protection from the harsher elements. Nothing left to do but move in and enjoy.

Features include:

- 3 bedrooms plus media room or potential 4th bedroom
- Winding paths & terraced gardens bordering a nature strip

🛏 3 🚿 2 🚗 2 📏 1,206 m²

Price SOLD for
\$1,050,000

Property Type Residential

Property ID 413

Land Area 1,206 m²

Agent Details

Office Details

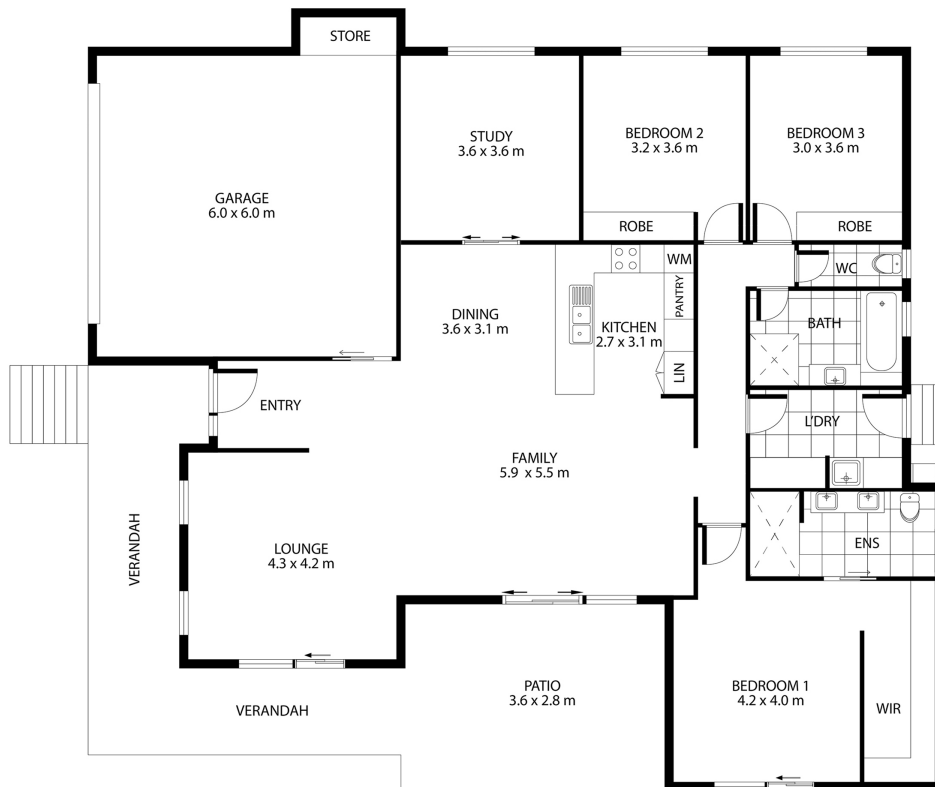
David Berns Real Estate
0408 629 438



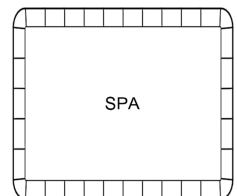
with running creek

- Bosch kitchen appliances, stone benchtops & 900mm gas range cooker
- Gas Hot Water system. Under house built-in storage area
- Short walk to Eumundi Shops, public heated swimming pool, Gym & Train station
- Easy access to arterial roads & 15 minutes to all that Noosa has to offer

The above information provided has been furnished to us by the vendor/s. We have not verified whether or not that information is accurate and do not have any belief in one way or the other in its accuracy. We do not accept any responsibility to any person for its accuracy and do no more than pass it on. All interested parties should make and rely upon their own inquiries in order to determine whether or not this information is in fact accurate.



Located
Under house
(Not Position)



10 Brushbox Place, Eumundi

Artist Impression ONLY. Every attempt to has been made too ensure the accuracy of this floor plan. All measurements are approximate and we take no responsibility for any error or mis-statement. This plan should only be used for real estate purposes for a prospective buyer. FLOOR PLAN BY ELITE FILM AND PHOTO | elitefilmphoto.com.au

